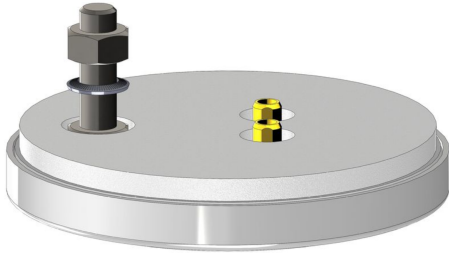


# Antenna-Railway-Indoor-01-2W

## Railway Indoor Antenna with MIMO WLAN + EN50155 + 3m Cable

Vertical and cross polarized dual-band antenna for signal enhancement in WLAN networks.



### Keyfeatures

<b>WiFi / WLAN</b>	MIMO 2.4 / 5 GHz
<b>Railway</b>	EN50155, EN45545
<b>Coach</b>	ECE R118

### Specifications

<b>WiFi / WLAN</b>	<b>Standards</b>	2 x Dual-band WLAN 2.4/5 GHz
	<b>Specification</b>	<b>Frequency</b> 2400 - 2500, 5180 - 5835 <b>Gain</b> 8,4 dBi (WLAN 2.4) / 9,1 dBi (WLAN 5) <b>VSWR</b> $\leq 1,8$ typ. <b>Impedance</b> 50 Ohm <b>Radiation</b> omnidirectional
	<b>Connectors</b>	2x SMA female
<b>Mechanical</b>	<b>Dimensions</b>	<b>Diameter</b> 96 mm <b>Height</b> 23 mm
	<b>Weight</b>	120 g
	<b>Mounting</b>	Rooftop with screws
	<b>Color</b>	black
<b>Environment</b>	<b>Operating Temperature</b>	-40°C to +80°C
	<b>Ingress Protection Level</b>	IP42
<b>Certifications</b>	<b>Compliance Standards</b>	EN 50155, EN 45545-2, ECE R118
	<b>Domain</b>	IEC 61373 Railway
<b>Extension Cables</b>	<b>WLAN</b>	2 x Ant-Cable-Railway-01-SMAm-TNCm-3 / 3 m / SMA male / TNC male
<b>Other</b>	<b>Order Code</b>	Antenna-Railway-Indoor-01-2W