

4G/5G

Intelligent IoT

Surveillance System

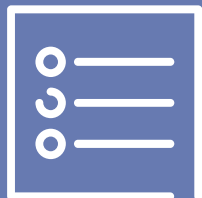
Introduction



Bringing Intelligent
Across All Beings

IoT Communication Expert

AGENDA



- ✓ | Intelligent IoT Surveillance Solution
- ✓ | Products Introduction
- ✓ | Product Features
- ✓ | Applications

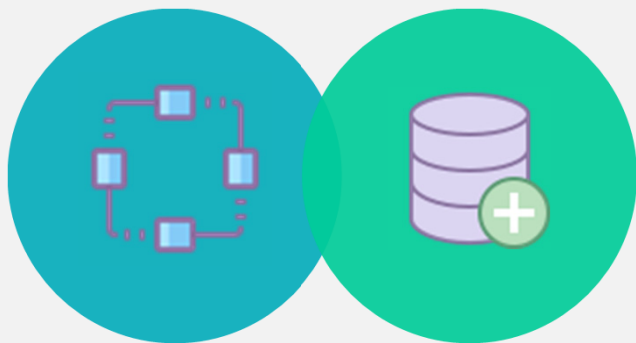
FOUR-FAITH INTELLIGENT IOT SURVEILLANCE SOLUTION

The Next-generation IoT Solution

FOUR-FAITH INTELLIGENT IOT SURVEILLANCE SOLUTION

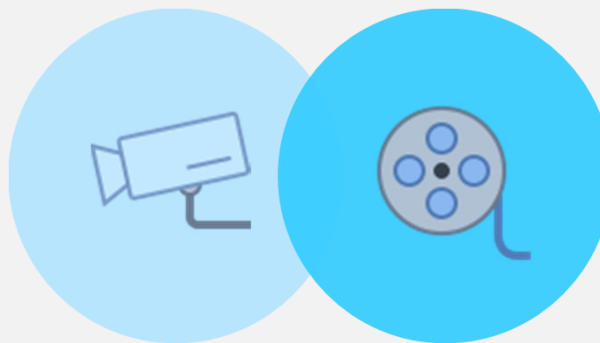
The Next-generation IoT Solution

Traditional IoT



Connecting Things, Monitoring Data

Traditional Surveillance System



Video Monitoring, Video Recording

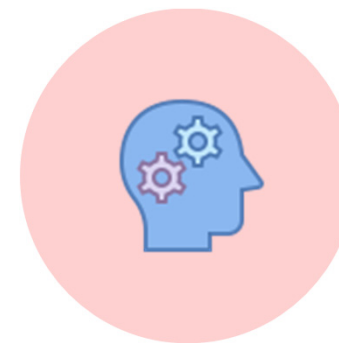
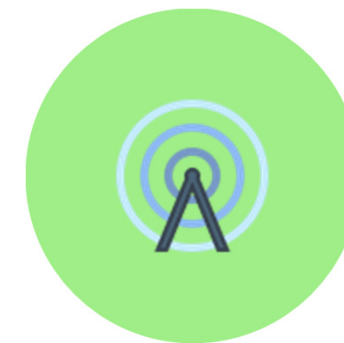


Image Recognition,
Intelligent Analysis



Wireless Network,
High-speed Transmission

DATA



VIDEO



AI



4G/5G

Four-Faith next-generation intelligent IoT surveillance solution, which applying all-in-one & multi-dimensional monitoring concepts to the IoT industry. The solution combines **Data**+**Video**+ **AI** + **4G/5G**, bringing the IoT industry into an intelligent visual monitoring era.

SOLUTION TOPOLOGY

FOUR-FAITH INTELLIGENT IOT SURVEILLANCE SOLUTION



PRODUCT INTRODUCTION

Four-Faith Intelligent IoT Surveillance Solution

PRODUCT INTRODUCTION

Four-Faith Intelligent IoT Surveillance Solution



1 IP Camera



2 NVR



3 PoE Switch

Four-Faith has a comprehensive range of security surveillance devices and solution, including various **Bullet & Dome Cameras**, **mini to large size NVRs**, **4-32 Ports PoE Switches**, **Cloud Platform**, **PC software and APP**. With the Four-Faith 4G/5G Wireless IoT products, users can set up an all-in-one Intelligent IoT Surveillance System.

4G/5G IoT BULLET IP CAMERA

F-SC241

F-SC241 is an industrial level IoT IP Camera, users can choose a fixed or 16X lens. It comes with a 4G or 5G cellular module, also embedded with multiple IoT interfaces & protocols.



ROBUST

Industrial level components & IP 67 metal casing



FEATURED

Worked as an NVR, can be embedded with 2.5" HDD or SSD



CUSTOMIZ-ABLE

Intergrade with RTU function, provides multiple interfaces & protocols



HIGH-SPEED

Embedded with 4G/5G high-speed wireless cellular module



Mini Dome IP Camera

F-SC621

F-SC621 is a turret style fixed lens mini dome camera, the fashion appearance fits most indoor scene.

- ✓ | **Turret Style**
Easy to adjust to any angle
- ✓ | **Compact Design**
Mini-compact size, occupy less space
- ✓ | **Microphone Inside**
Collect real-time image & sound
- ✓ | **IR Night-Vision**
Deliver clear image in low light or no light environment

Speed Dome PTZ Camera

F-SC431

F-SC431 is a large size Speed Dome PTZ Camera, can do 360° pan and 90° tilt precisely. It can be customized to add multiple IoT interfaces.

- ✓ | **360° Endless PTZ**
Point to your desired area in less than a second
- ✓ | **30X AF Motorized Lens**
Industrial level AF Motorized Zoom Lens
- ✓ | **IoT Interfaces**
Comes with serial ports, I/O, relay & audio interfaces
- ✓ | **150M IR Night-Vision**
3 sets of IR LED lights, night-vision distance up to 150m



Mini & Pro Bullet IP Camera

F-SC311 & F-SC332

F-SC311 & F-SC332 are the mini & pro size bullet camera, users can choose fixed, 3X or 4X lens. It can be customized to add multiple IoT interfaces.

- ✓ **Streamline Design**
Suitable for both indoor & outdoor environment
- ✓ **Customizable IoT Interface**
Serial ports, I/O, relay & audio interfaces (optional)
- ✓ **MicroSD Slot**
Recording videos without using an NVR
- ✓ **IR Night-Vision**
Deliver clear image in low light or no light environment

F-NVR100 Network Video Recorder

F-NVR100-8C, F-NVR100-8C8P



Compact Design

Suitable for most distribution or switch box, 1 x 2.5" HDD or SSD slot

Various Interfaces

3 x serial port, 8 x analog input, 6 x I/O, 2 x relay, etc.

PoE Power Supply

8 x PoE port, support 802.3AF, 802.3AT

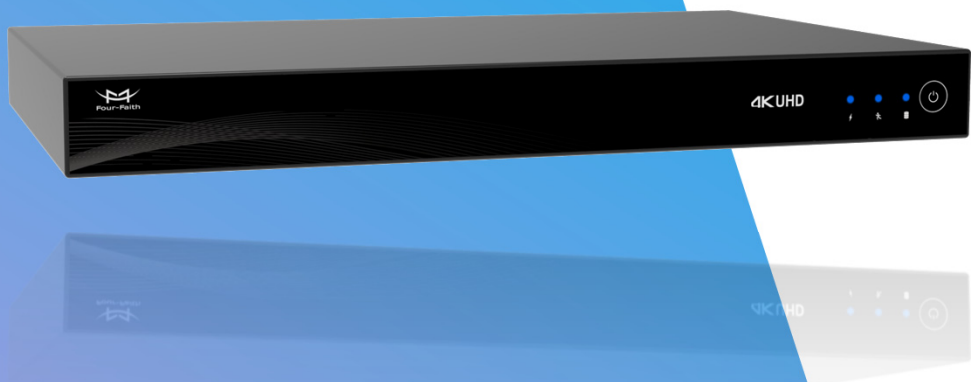
Low Power-Consumption

Data collecting can be running independently without power on the video module

F-NVR100 is an 8-channel industrial level IoT network video recorder. It supports up to 8 channels HD IP video input and 8 PoE power supply (Optional), up to 4TB HDD capability. What's more, it can be integrated with 4G or 5G cellular module inside.

F-NVR200 Network Video Recorder

F-NVR200-16C, F-NVR200-16C8P, F-NVR200-16C16P



16 Channels & 2 HDDs

Support 16 channels H.265/H264 Video Input, 2 hard disk

4K Ultra HD

HDMI video output up to 4K (3840 x 2160) resolution

PoE Power Supply

8/16 x PoE Ports, support 802.3AF, 802.3AT

4G/5G High-Speed Cellular Network

Compatible with 4G or 5G high-speed Cellular module, remote monitoring from anywhere wirelessly

F-NVR200 is a 16-channel dual HDD Network Video Recorder. It supports up to 16 channels HD IP video input and 8/16 PoE power supply (Optional), up to 12TB HDD capability. What's more, it can be integrated with 4G or 5G cellular module inside.

F-SW1010 Industrial Unmanaged Switch

F-SW1010-SF, F-SW1010-8P-SF120W



1000M Port

1 x 1000 BaseSFP slot and 1 x 10/100/1000M Base-T Ethernet Port

High-Speed Forwarding

High-speed forwarding ensure data transferred in real-time without blocked

PoE Power Supply

8 x 10/100M adaptive ethernet ports, support auto MDI/MDI-X, PoE (optional)

Industrial Grade

IP40, metal casing, support DIN-Rail mounting

F-SW1010 is an unmanaged industrial ethernet switch. It can be used for connecting multiple servers, hubs, repeaters and devices provides long distance data and power (PoE version) transmission.

F-SW1032 Industrial Unmanaged Switch

F-SW1032-SF, F-SW1032-24P-SF240W



1000M Port

4 x 1000 BaseSFP slot and 4 x
10/100/1000M Base-T Ethernet Port

**High-Speed
Forwarding**

High-speed forwarding ensure data
transferred in real-time without blocked

PoE Power Supply

24 x 10/100M adaptive ethernet ports, support
auto MDI/MDI-X, PoE (optional)

Industrial Grade

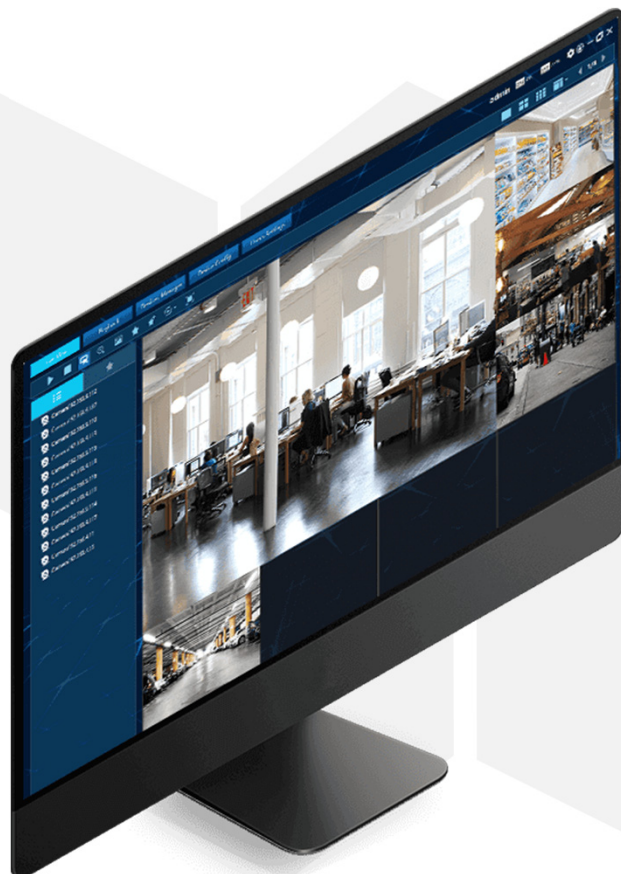
IP40, metal casing, support DIN-Rail
mounting

F-SW1032 is an unmanaged industrial ethernet switch. It can be used for connecting multiple servers, hubs, repeaters and devices provides long distance data and power (PoE version) transmission.



Incisive Tools

Manage All the Cameras in Just One Software



1

SEARCH ACROSS DIFFERENT SUBNET

The tools will list out all the cameras in the same LAN even in a different subnet, and manage any camera across any subnet

2

GROUP MANAGEMENT

No need to set up one by one, with just one click, you can batch configure multiple devices

3

WATCH WITHOUT EXTRA PLUG-IN

Watch the live stream videos without installing any plug-in on the software

4

BATCH UPGRADING

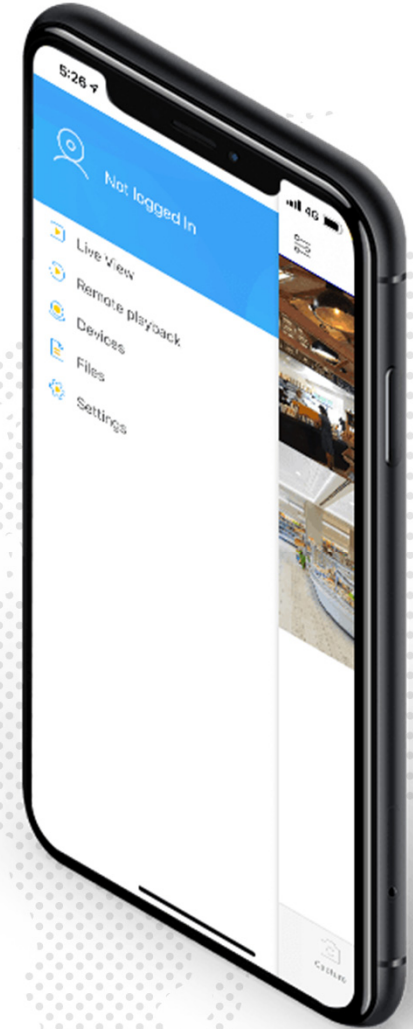
One click to upgrade all the devices in the same network



Incisive View APP

Connect with the Camera in Any Place

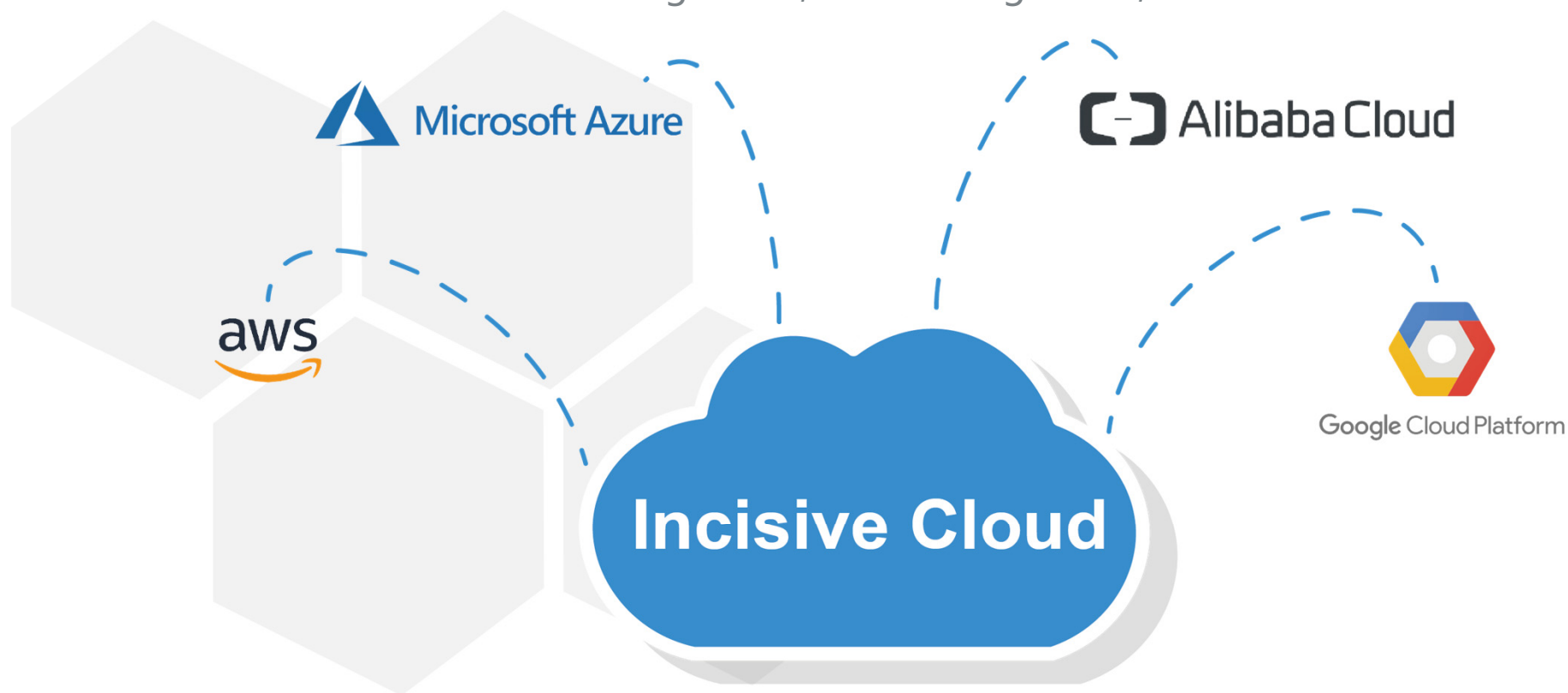
- 1 Live Multi-screen Streaming
- 2 Remote Playback
- 3 Device Management
- 4 File Management
- 5 Alarm Push
- 6 System Configuration





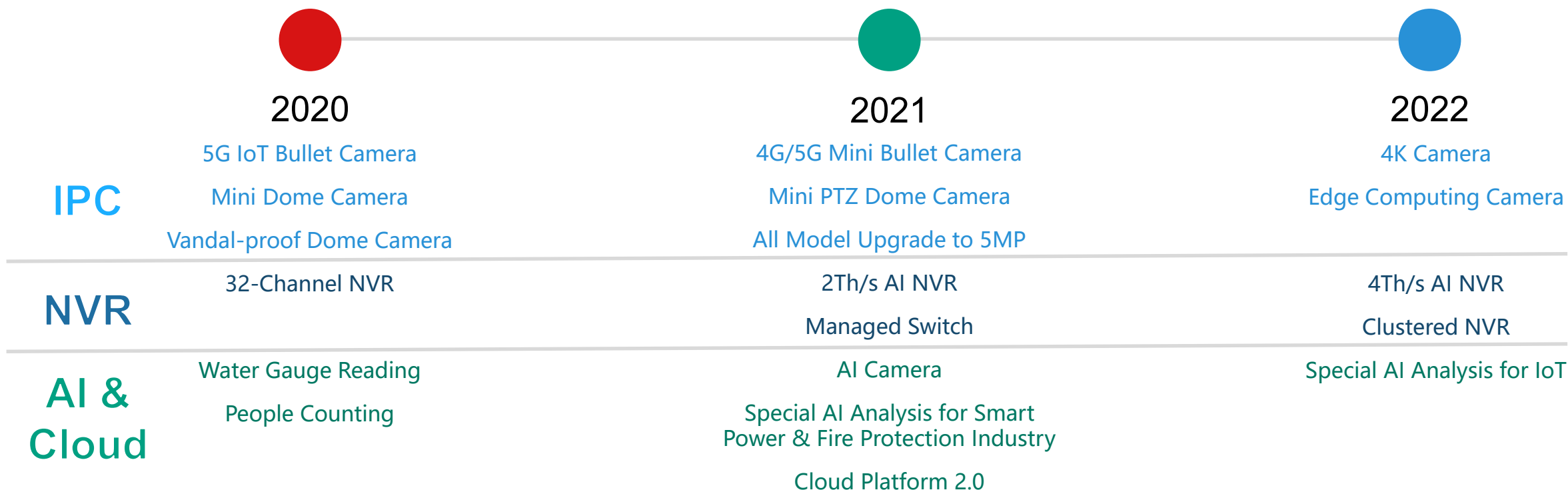
Incisive Cloud Video Platform

Incisive Cloud Management Platform allows users to monitor and manage all the cameras and NVRs remotely from the PC browser. Also, it provides video playback, log management, alarm management, user management, etc.



Product Roadmap

Four-Faith Intelligent IoT Surveillance Solution



In the next few years, Four-Faith will vigorously develop our Intelligent IoT Surveillance System. By integrate Data + Video + AI + 4G/5G, Four-Faith is aiming to create the most advanced IoT monitoring solution, bringing the IoT industry into an intelligent visual monitoring era.

PRODUCT FEATURES

Four-Faith Intelligent IoT Surveillance Solution

4G/5G High-speed Cellular Network

Wireless Communication

Break through the limitations of wired networks, deployed flexibly;
High-speed wireless network transmission, real-time monitoring;

Unique Users



50.17
Billion

Mobile Connection



90.42
Billion

87%

Land of The World Has Cellular Network Coverage

Four-Faith Intelligent IoT Surveillance Products support wireless 4G/5G connection, can be deployed to any area with the cellular network coverage.



IoT Interface Integration, **Highly customizable**

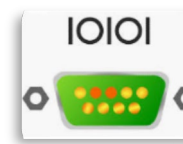
IoT Integration

Four-Faith is the M2M wireless communication expert in the IoT industry, with more than 10 years' experience, we are confident to conquer any complex IoT challenge.

Four-Faith products can be integrated with most common IoT interface such as RS232, RS485, I/O, Relay, Analog Input and so on. With built-in IoT protocols such as Modbus, MQTT, etc., Four-Faith provides an all-in-one IoT surveillance solution to save your resource at the same time improve the system integration.



IoT
Applications



Multi-interface
Customization



All-in-one
Solution

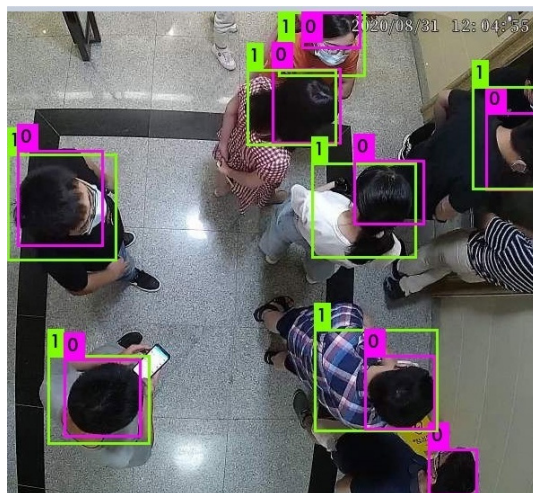
AI Image Recognition

Artificial Intelligence



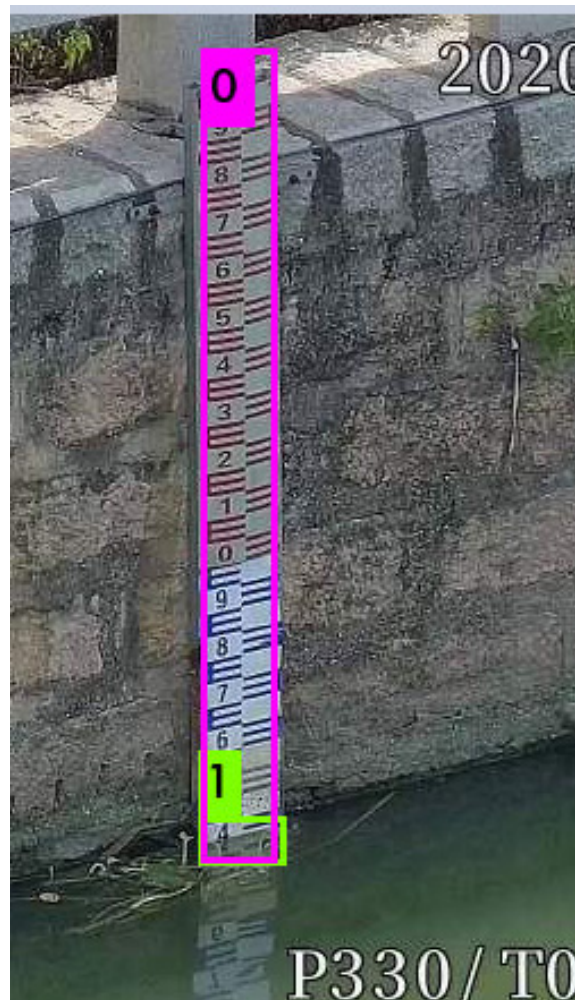
People Counting

Turn your traffic data into powerful insights



Water Gauge Reading

Automatically read the water level

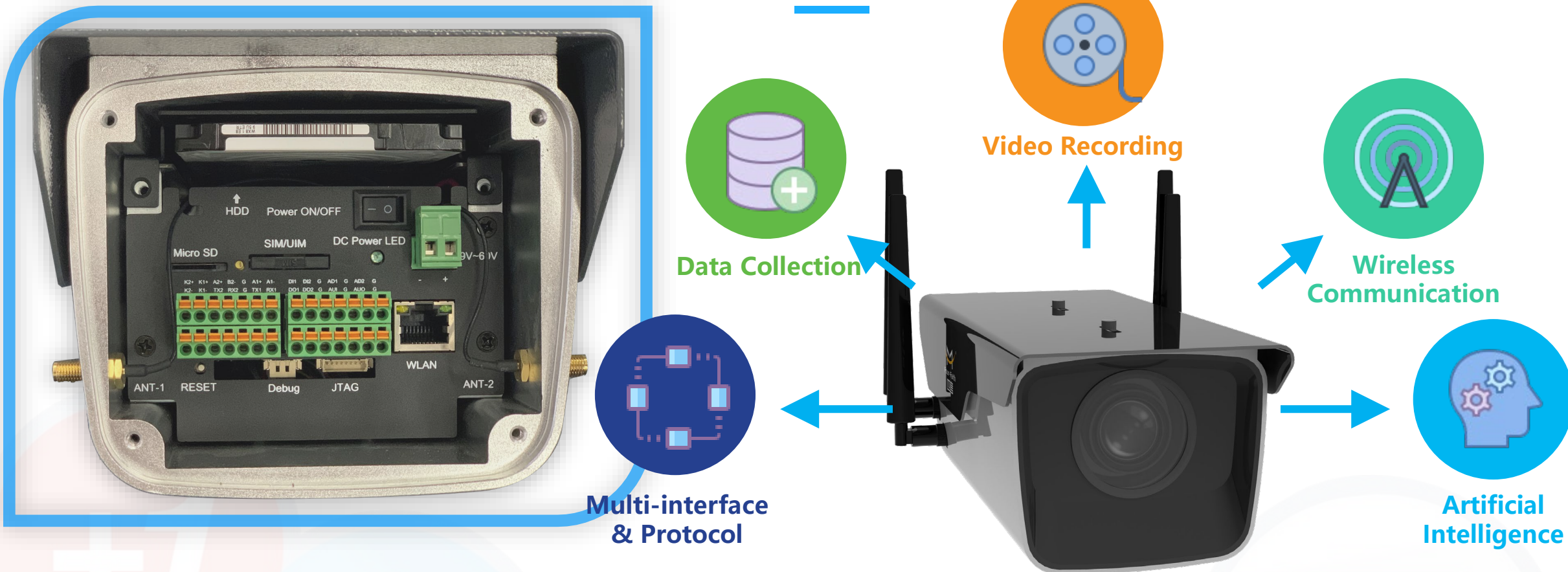


The Four-Faith Intelligent Algorithm Team is committed to developing industry-level image recognition technology for IoT industry. Currently, the People Counting and Water Gauge Reading algorithms has been completed, and several industry-level algorithms are in the implementation stage.

**ARTIFICIAL
INTELLIGENCE**

Edge Integration

All-in-One Device



This solution solves the pain points of difficult deployment, incompatibility, non-interaction of IoT equipment; and processing of basic protocol conversion and intelligent analysis at the front-end in real-time, which saves network resources and improves the response speed.

Industrial Level Stability

Industrial Level Design, Provides Better Stability And Durability

Industrial Level Protection

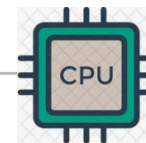
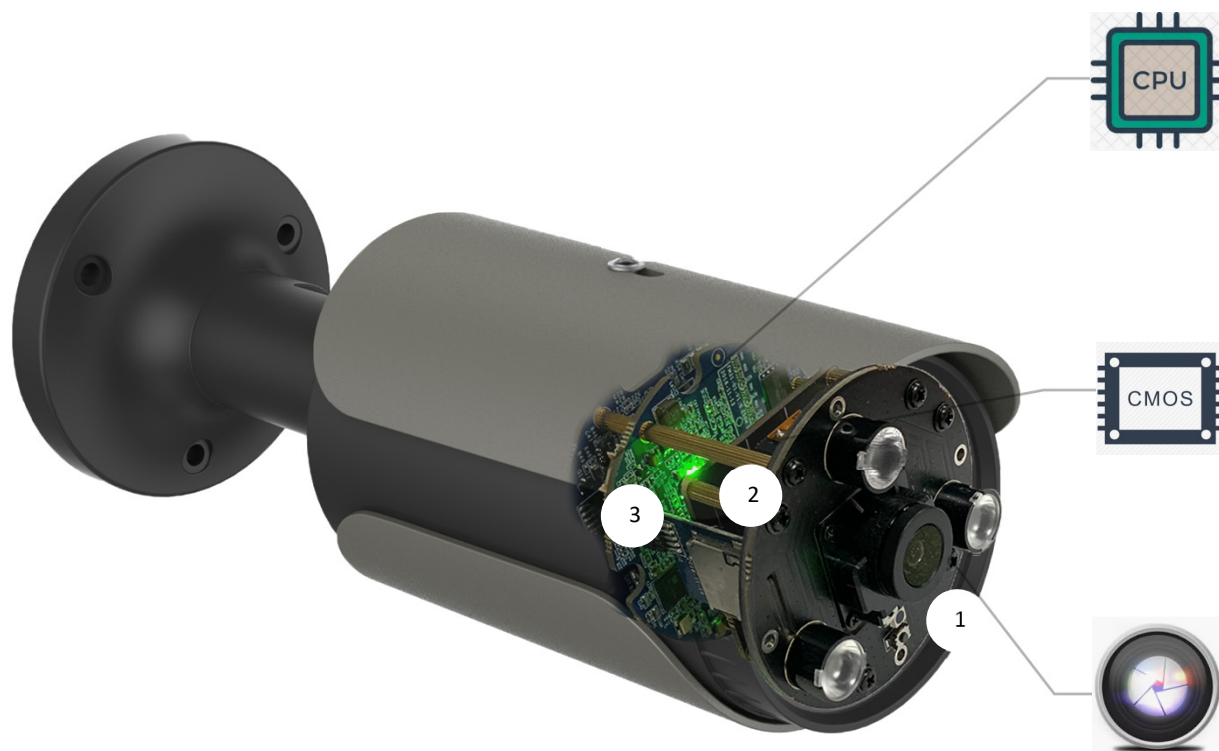
Metal casing, high protection level, suitable for various rugged environment

24/7 Unmanned System

Cutting-edge Solution;

Massive Restructuring & Refactoring;

Multiple System Protection Mechanism



CPU

high-end chip, powerful processing capabilities



Sensor

SONY top-level CMOS sensor



Component

Industrial-grade components, durable, stable and reliable

Industrial Applications

Four-Faith Intelligent IoT Surveillance Solution

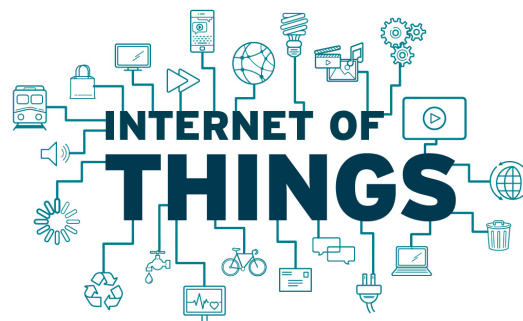
INDUSTRY APPLICATION SOLUTION

Suitable For Various IoT Applications, Not Just For Video Surveillance



Unmanned Monitoring Applications

The camera can be customized to add various IoT interface, act as a traditional data transfer unit. It can transfer data at the same time deliver the on-site image.



IoT Project Applications

Suitable for different IoT monitoring projects, such as Fire Auto-alarm System, Disaster Alarm System, etc., cooperate with other IoT equipment to build intelligent IoT system.



Security Monitoring Applications

Traditional video surveillance system, monitoring indoor and outdoor locations, factories, residential areas, office, etc.



Special Industry Applications

Some special industries require specific protocol and standard, such as GB28181, can be integrated into the camera.

Cargo Monitoring Project



Riverway/Hydropower Station Monitoring Project



THANK YOU!

THE **END**

Xiamen Four-Faith Communication Technology Co., Ltd.

Tel: +86-592-5907276 5907277

Fax: +86-592-5912735

E-mail: info@four-faith.com

Website: <https://en.four-faith.com>



© Four-Faith 2020
YuanYe Wayne Zeng